

## ***CLOSING***

We hope you have found this Guide useful. If you have any questions, comments, or suggestions, please feel free to contact Chapter B's Chapter Director or his assistant Director at the phone number or email listed

### **Sunsphere Wings**

Tennessee Chapter B  
Knoxville, Tennessee



**Chapter Directors  
Stanley & Patty**

# **Eagle Wings Motorcycle Association**



## **Chapter TN-B Sunsphere Wings**

**Knoxville Tennessee**



**EWMA**



**New Member Orientation Guide**

Revised by Tom Peck  
5/2/2023

Thank you for allowing us to introduce you to one of the Greatest organizations you will ever be involved with. The Sunspire Wings Chapter B was Chartered in 1982 in the Gold Wing Road Riders Association, the same year the World's Fair was here in good ole Knoxville, Tennessee. Over the years Chapter B is still one of the most active chapters in the State of Tennessee

Chapter B was one of 29 Chapters back in the Day! Our Association was over 40 years old and as the core membership grew older many activities change and many converted their Goldwing to a three wheeler others moved on to other fun activities. Our association eventually closed its doors in 2022 due to dwindling membership. A New Association started up doing the same things as we have become accustomed to. We are now the **Eagle Wings Motorcycle Association (EWMA)** Chapter B was chartered in November 2022

## Table of Contents

Welcome .....	3
History .....	4
Benefits .....	5
Structure & Organization .....	6
Membership Categories.....	8
Group Riding .....	9
Chapter Life .....	10
Chapter Newsletter .....	11
Joining a Chapter, Chapter Staff.....	12
Vest, Pins & Patches.....	14
The Buzz, Chapter Newsletter .....	15
Vests, Pins and Patches .....	16



Date: 3/4/2023

• **Dessert or Ice Cream Ride:** This is similar to a “dinner ride” except, as the name implies, a stop is made for some sort of dessert like ice cream since most GWRRA members *love* ice cream!

• **Dinner Ride:** Most Chapters schedule dinner rides (year around by bike or, in bad weather, by car) to their favorite restaurants. Normally these rides will be published in the Chapter Newsletter or in the “Annual Ride/Activity Schedule”. These rides will start from a designated point and may be a short ride or a longer ride with a final stop for dinner.

• **Field Events:** These events can be both on-bike or off-bike. On-bike events are done at low speed (usually first gear) within a designated area and are designed for fun! One event requires a co-rider to take a bite out of a hot dog dangling from a string overhead as they slowly ride by! Off-bike events are similar to on-bike events except they're done off the bike. Plaques, trophies and other similar forms of recognition are normally given to recognize the winners within each event.

• **Fifty-fifty (50/50):** To help fund expenses, tickets are sold (where legal) and are based on a random drawing. Half the money (50%) is given away, typically in increments of 25% twice (50/25/25), and the other half (50%) is deposited into the treasury. 50/50 tickets are sold at Chapter meetings, rallies, and other events.

• **Mall Show:** This is a pre-scheduled “bike show” set up at a local shopping mall. By displaying our beautiful machines we have the opportunity to recruit new Members who may not have .

• **Poker or Observation Run:** A poker or observation run normally serves as a fund raiser for the Chapter, District or Region. There are many formats, but these are basically conducted as follows: You sign in, pay a nominal fee and receive a set of directions for a scenic ride. During the “poker run” you may be required to stop at certain checkpoints and draw a card or draw all your cards at the end of the ride when you check in. As in poker, the best hand wins a plaque, trophy or fixed cash prize. An “observation run” is similar, but requires that you answer questions about sights along the route. The person who answers the most questions correctly

## TERMINOLOGY

As with any organization, there are terms you will hear which may be new to you or may have some unique meaning within GWRRA. We've attempted to identify and define some of these. However, if you hear something not described in this Handbook, feel free to ask your Chapter Director.

- **Bug Run:** Same as a "poker run" or "observation run" (see last listing) except you have a target on your bike. The bike that returns with the bug closest to the bull's-eye or with the most bugs on the target wins. For more details, see the "Fun Activities Guide" available from your Chapter Director.
- **Charity or Toy Run:** You will find that people in this Association have a big heart and like to help the less fortunate. Many times a "charity" or "toy" run is held where you will meet at a pre-arranged point with a new stuffed toy. With the assistance of the local law enforcement you are "escorted" to a children's hospital or ward to deliver toys to children with critical and even terminal illnesses. Visits are also made to nursing homes, homeless shelters and other similar places to share some joy and happiness.
- **Couple of the Year (COY):** The Couple of the Year program was started in 1988 as a way to recognize couples that best represent the qualities and ideals of our Riding Group and its Members. The Chapter Couple of the Year is selected within our Chapter by the previous Couples from the past 3 yrs. They forward their suggestions to the Chapter Director and his Assistant who make the final decision who will best represent Chapter B who will make the best couple to represent Chapter B for the next year
- **Chapter Individual of the Year (IOY)** The past 3 Individuals submit their suggestion to the Chapter Director and his assistant who will make the final decision who will make the best individual to represent Chapter B for the next year

It is our pleasure to welcome you to *Knoxville Sunsphere Wings Chapter B*. The "Chapter concept," we offer a nonpolitical environment to meet new friends; to enhance your motorcycle skills and knowledge; and an opportunity for you to join us in improving the image of motorcycling. EWMA welcomes you as a partner in our efforts to promote motorcycling through "*Friends for Fun, Safety, and Riding*".

### **Our Vision:**

A simple, fun, riding, social association of like-minded motorcycle enthusiast

### **Our Motto:**

Friends for Fun, Safety & Riding

### **Our Mission:**

To provide to our Membership a fun and social environment that focuses on the love of motorcycling. To bring the world together around that passion while helping them to be safer and mindful when riding a motorcycle. To be a family-oriented, non-religious, non-political association, respectful of each other's beliefs.

Enjoying the ride together with like-minded motorcyclists.

### **Our Core Values:**

**FAIRNESS:** All issues should stand the test of "is it fair?"

**COMMUNICATIONS:** The more we share information and communicate about our common love of motorcycling, the more we will all learn and benefit.

**TEAMWORK:** Working together toward our common vision, motto and mission keeps us focused and gives us the ability to become exceptional.

**QUALITY:** To be the best we can, treating all the way we would want to be treated, holding each other in highest esteem and respect in all we do.

**ATTITUDE:** We are each responsible for our own attitude. Strive to be positive, constructive, respectful, enthusiastic and creative in all interactions with members or public to enhance the relationship and promote our motto

# More History



Chapter B home based here in Knoxville Tennessee, our Home Meeting place is Shoney's located on Clinton Hwy just off I-75 at exit 122 the towards the Museum of Appalachia. We have an active membership of about 35-45 people, mostly couples and many single members also. We meet monthly always the first Tuesday of each month at 6 pm when most will enjoy the food that Shoney's provides and the meeting or gathering starts promptly at 7 pm. We welcome all riders, many of our members ride 2 and three wheeler Goldwing's but many have other brands i.e. CanAm Spyder's, Harley's, Yamaha's as well as other touring bikes and Cruiser bikes. We know there are many proud owners of many different brands but they are ALL welcome at ChapterB

One thing we always say. As long as the knees are in the Breeze your one of us. Come see what Chapter life is all about and join us here at Chapter B Eagle Wings Motorcycle Association.

Please visit our Nation organizations web site at:

**<http://www.ewma-world.org>**

You are also encouraged to visit the Chapter B web site at:

**<http://www.tn-b.org>**

Suggestions and recommendations are always welcome and encouraged!

## ***RALLIES***

### ***"Spring Fling"***

Each year rallies are held at the District (State), They all have one express purpose in mind: to provide a fun, social environment for the participants. District rallies are normally 2 days; Regional rallies are normally 3 days and the Depending upon the size of the rally, they are held at convention centers, hotels, fairgrounds, schools or other locations.

Regardless of which rallies you attend, they typically have several things in common. For those who like to compete, there are bike shows, field events and talent shows. In addition, seminars, poker or observation runs and many other fun-filled things are provided. The rally vendors sell most everything: leather, chrome, polish, pin striping, cargo trailers, campers, tires, tune-ups, oil changes, helmets and a multitude of other "must have" accessories.

When the weather turns colder and the Gold Wing has gone into hibernation, many Districts also hold "winter rallies" to give our Members an opportunity to socialize during the off-season months. These rallies go by various names, such as "Wingless Weekend", "Cabin Fever", and our own "Winter Event". They offer many of the same activities as the warmer weather rallies, with the exception of activities requiring a Gold Wing.



# "Chapter Visitation"

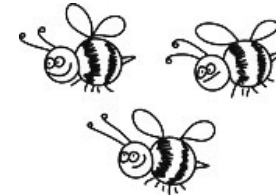
T  
a  
v  
e  
-  
n  
g  
P  
-  
a  
r  
k  
e  
s

**Chapter B** meets the **1st Tuesday** each month at Shoney's **Clinton** Exit 122 off I-75 North Eat at 6:00 pm meeting at 7:00 pm Call **Tom or Merrilee Peck** 423-907-9712/423-494-9818

**Chapter A2** meets the **3rd Monday** each month at Shoney's 1021 Lamar Alexander Pkwy Maryville Eat at 6 pm Meeting at 7 pm Chapter Directors Todd & Melanie Freeman 865-963-1051

**Chapter M** meets the **2nd Tuesday** each month at Shoney's in **Lenoir City 1100 Hwy 321** Eat at 6:00 pm; meeting starts at 7:00 pm. Call **Brian Richards** 865-249-6173

Chapter **C2** meets the 3rd **Thursday** at Eat at 6:00 pm Lacosta Restaurant 138 The Crossing Crossville, TN. Meeting at 7:00 pm Chapter Director Randy & Stephanie Ryan **985-201-3791**



## Group Riding

One of the most important activities of course is riding with our friends. The more we all know about how to ride in a group the safer it will be for everyone. Lets look at a few suggestions that will make riding as a group more fun and exciting.

- 1) Establish a Lead and a Drag for the group. It's best if these 2 bikes have CB radios.
- 2) Maintain a staggered type formation when possible moving to single file then back to staggered as the road condition vary. Road construction, curves, narrow roads etc are situation that may require you to change to a single lane formation.
- 3) Split up larger groups if the there are more than 5 or 6 bikes.
- 4) Maintain proper distance between you and the bike in from of you. A good rule is the "Two second Rule" Adjust your speed to maintain a 2 second spacing behind the bike directly in front of you.
- 5) Group spacing should be about 1/4 mile, within CB range This can vary as traffic conditions change.
- 6) Stay in you lane as best as you can, Moving from one lane to the other varies the assured clear distance established by the staggered formation.
- 7) Take the group riding seminar offered by the Rider Education Program.
- 8) Always ride YOUR bike within YOUR comfort zone.



## CHAPTER LIFE



Many Members feel the Chapter is the single, most important benefit of belonging to EWMA and for many reasons such as:

- Countless **new friends** are made with a common interest.
- Lots of **events** to ride our Motorcycles with friends.
- Emphasis on **safe riding** for a more enjoyable riding experience.
- **Rider training** to improve riding skills and safety techniques.
- A opportunity to **live** our motto **“Friends for Fun, Safety and Riding”**.

On Page 16 is a listing of other Chapters in our area. Visit these chapters when you can. Monthly meetings are really social events to inform, educate and just plain have fun. When you first attend you will be introduced as a **“First-Time-Visitor”** and during subsequent visits you will simply be welcomed as one of the Chapter’s “extended family.”

We want your first visit to be as much FUN as possible so we’ll address some questions you may have. First of all, you don’t “join” a Chapter. You are a **member of EWMA** and a **participant of a Chapter or Chapters**. You can participate in as many or as few activities and Chapters as you wish!

There are **no applications or fees** needed to participate in a GWRRA Chapter. With over 900 Chapters you’re never far from “home” when you travel. Each Chapter has someone who has volunteered to run the Chapter and they’re known as the **“Chapter Director”** or **“CD.”** Their assistant is called the **“Assistant Chapter Director”** or **“ACD”** for short. These are the individuals who help organize and run the chapter, and can answer most of your questions. Their first responsibility is to make sure the chapter meetings are FUN!

At the end of the chapter meeting there will be **door prize and 50/50 drawings**. (See page 19 for an explanation of the 50/50 drawing). The door prizes are meant to be fun, and sometimes are silly, sometimes useful, and sometimes loaded with calories! Although they are donated by chapter participants there is no obligation or requirement to do so.

## Annual EWMA Special Events

**Tennessee Winter Event, usually in middle Tennessee (January or February)**

*Tennessee’s Winter Getaway*

**Spring Fling, Pigeon Forge (April)**  
*TN District Rally*

**Down Home West Virginia, Ripley, WV**  
*WV District Rally*

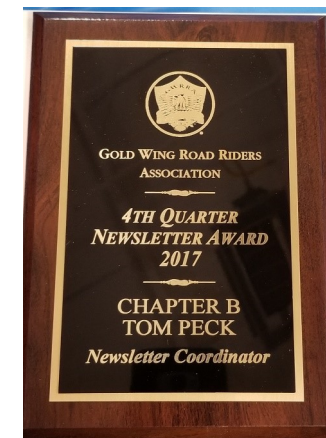
**Bluegrass Blast, Somerset, KY District Rally**

**Americade: Lake George New York annual event**

**Wings Across Tennessee, Bristol to Memphis (September)**  
*District-wide fund-raiser for St. Jude’s*

**Wings Over The Smokies, (September) NC District Rally**  
**Rally In The Valley, Salem VA District Rally**

**Knoxville Ride for Kids,**  
*Chapter B supports this annual event that benefits the Pediatric Brain Tumor Foundation.*



## VESTS, PINS AND PATCHES

One thing you will notice is the number of members wearing leather or fabric vests with pins and patches. Most of those represent a fond memory of a "ride" or "event" the member participated in. Others represent a volunteer leader position the member holds or has held, while others signify the achievement level in the Rider Education Program or a Leadership Training course.

These pins and patches are basically souvenirs that are fun to look back on for the memories each represents. When you begin to participate, you too will soon have a host of pins and patches to remind you of the fun times! But, ...wearing a vest is certainly not required. The photo below was taken of our Chapter B family capturing the Traveling Plaque from another Chapter



Chapter B capturing the traveling Plaque from Chapter F



## Chapter B Sunsphere Wings, Knoxville Tennessee

A Chapter Newsletter, usually on a monthly basis. When you attend your first meeting, you will probably be asked to sign in so you can be added to the newsletter mailing list. In it you'll find everything from upcoming rides, recipes, motorcycle items for sale and information about other Chapter events.

You may see or hear someone selling "50/50" tickets at the Chapter meeting (For more info on 50/50 see page 19) . First and foremost, you are under no obligation to purchase these tickets or anything else at a Chapter meeting. Your attendance does not cost you a cent. These tickets are sold (where legal) to help the Chapter cover some expenses, such as printing and mailing newsletters. Chapters are self-supporting and do not receive any portion of your annual EWMA membership dues. Because most Chapters incur expenses (e.g., printing newsletters, annual ride schedules, event flyers, etc.), various methods of raising funds are found.

In addition to "50/50" tickets, other events, such as craft and bake sales and raffles are conducted by the Chapter and there is no obligation to buy anything in order to participate. Chapter members are always encouraged to bring door prizes to the monthly meetings. Nice for everyone to go home with a prize.

During the non-riding season, there are numerous Chapter events, such as bowling parties, roller skating parties, potluck suppers, chili dumps, and many others. After all, this is a social/fraternal organization where its Members like to be with other Members when not riding their motorcycles.

## How do you join a Chapter?



The first time you visit a chapter you are known as a “guest”. Being a guest allows us to recognize you as a new person. Sometimes in the confusion of gathering, our Chapter Director and others may forget to introduce themselves. Please seek them out and introduce yourself to them. We all want to meet you.

Once you choose your Chapter, you become part of that family by simply being there and participating. There is no cost or additional applications. The EWMA has a network of Chapters worldwide, so you’re never far from “home”, even when you are traveling on the road. We will encourage you to join our National Association the **Eagle Wings Motorcycle Association** and of course we hope you will choose Chapter B as your home Chapter



### Chapter Staffing

The District (State) appoints all Chapter Officers (Chapter Directors, Assistant Chapter Directors and Chapter Educators). There are No elections held within the GWRRA. The organizational structure of our leadership is as follows:

National Director  
Region Director  
District Director  
Chapter Director

At all levels, each Director then appoints his or her own staff. There are many staff positions to fill depending on how active the Chapter is. Our chapter always encourages all participants to be active. Once you feel comfortable with us, take a position (within the Chapter), and give us your best.



## Just a few Staff positions

Chapter Director  
Assistant Chapter Director  
Chapter Educator  
Treasurer  
Newsletter Editor  
Pins & Patches (Company Store) (Quartermaster)  
Chapter Historian  
Ride Coordinator  
Rally Coordinator  
Couple of the Year  
Membership Enhancement  
Sunshine Coordinator  
Webmaster  
Special Event Coordinator  
Ways and Means  
Scrap /Picture Book  
etc.  
etc.



### Chapter Money



The Chapter Director uses the chapter funds to cover the expenses of the chapter. These expenses may include the cost of the monthly newsletter, postage, telephone calls, staff and officer training meetings, chapter chartering fees, supplies, etc. anything that is necessary to keep the chapter running. Annually the Chapter Director submits a financial statement to their District Director. The chapter treasurer cannot live in the same household as the Chapter Director. 50/50 or 50/25/25 tickets are sold, to all those who want to participate, during chapter gatherings. Half the money is placed in the chapter funds. Thus the name 50/50. This is a voluntary donation and you are not obligated or pressured to purchase the ticket. This activity alone can fund the monthly chapter newsletter.