



"The Buzz"

Eagle Wings Motorcycle Association



**Chapter B SunSphere Wings
Knoxville Tennessee
November 2024 Newsletter**

EWMA Officers

Anita Alkire, CEO
Bruce Beeman, COO
Bob & Nan Shrader, President

**Richard & Connie Pendleton
Tennessee District Directors
Eagle Wings Motorcycle
Association**

**Chapter B Directors
Stanley & Patty Rinehart**
You can reach us at
423-912-0848
Stanleyrinehart@bellsouth.net



*SunSphere Wings
In Knoxville, Tennessee*

*Home of the 1982 Worlds Fair
Now Charter members of the
Eagle Wings Motorcycle Association*



*Join us the First Tuesday each month at Shoney's Restaurant
2405 Andersonville Hwy, Clinton, TN 37716, Exit 122 off I-75
(Rt. 61 Museum exit) Just north of Knoxville, Ph. 865-494-7295
Eat at 6:00 PM & our social starts promptly at 7:00 PM*

Volume 42: Number 11

**Chapter B Web Site
www.tn-b.org**



Chapter B Staff

Directors/Newsletter editor

Stanley & Patty Rinehart
423-494-0848 (mobile)
stanleyrinehart@bellsouth.net

Assistant Directors

Rick James (Deniese)
865-441-5770 (Mobile)
richanddejames@yahoo.com

Treasurer

Barbara Sowder (Bill)
423-489-4387
bbsowder@hotmail.com

Web Master

Tom & Merrilee Peck
tomkatpeck@msn.com

"Couple of the Year" 2024

Scott and Amy Seal
gwr2003@live.com

"Individual of the Year" 2024

Herbert (Peanut) Davis

Ride Planner

Wally Maliskey
865-617-4151
bamawing@comcast.net

Membership Enhancement

Merrilee Peck (Tom)
865-256-1250
merrileepeck@msn.com

Chapter Store

Deniese James (Rick)
richanddejames@yahoo.com
865-335-9424

Happy Trails Editor

Scott Wiens (Hedie)
865-684-3656
flscott66@gmail.com

Sunshine

Emily Lewis
865-803-5668
mawmawx3tce@gmail.com

Technical Advisor

Chris Harden (Julie)
865-670-9010
carworksofknoxville@yahoo.com

Awards Coordinator

Patty Rinehart (Stanley)
423-437--0810
stanleyrinehart@bellsouth.net

Stanley & Patty Rinehart Chapter B Directors



November is here and seems like it showed up fast this year but with November comes fall and Thanksgiving and I am sure we all have a lot to be thankful for. Just a few things that I am thankful for is having had relatively good health this year as has Patty and I have been blessed she has been with me all these years and I am also thankful for the rest of my family. But there are many other things as well, I am thankful that we have made it through another riding season safe as has our whole chapter which we are extremely thankful to have in our life as you are part of our extended family. I would like to take this time to thank everyone that has made Chapter B a success and that has made doing things together so enjoyable, from acting silly at spring fling to cooking out together at our chapter picnic. I would also like to thank our officers in our chapter that donates their time to making it all come together, Rick and Deniese our Assistant Chapter Directors and company store, Barbra Sowder our Chapter treasurer, Scott Wiens our Happy trailers editor, Chris Harden our Chapter Technical Coordinator, Wally Maliskey our Ride Coordinator, Emily Lewis our Sunshine Lady, Tom Peck our Web Master, and our 2024 Couple of the Year Scott and Amy Seal and our 2024 Individual of the Year Herbert Peanut Davis, all these people play a big part of Chapter B's success. I also want to give a very big thank you to Mike and Linda Bridges for opening their home up to us every year for our Christmas Dinner and I am also thankful to everyone in the chapter that steps up when needed, from cooking at our cook out and Christmas dinner to leading rides, and also for everyone's effort in selling our gun raffle tickets this year which was a big success I want to Thank Scott Seal for running that whole operation and to Tom Peck for printing all our tickets. Patty and I want to Thank you all for being part of Chapter B, we look forward to seeing you Tuesday night.



Stanley and Patty

Assistant Directors



Rick and Deniese James
Chapter B Assistant Directors





Happy Trails



The Benefits of Group Riding

Sunsphere Wings is a chapter of the Eagle Wings Motorcycle Association and in its more than 40-year history there have been literally hundreds of group rides enjoyed by the members of the chapter. However, there are some of us who were relatively new to group riding when we came to the chapter and discovered there are many great benefits to riding together in groups. I thought it would be good to remind us all of what those benefits are.

Safety In Numbers – When riding with a group you have the benefit of having more eyes on the road to spot potential hazards. This means the lead bikes can alert the other motorcycles about hazards up ahead. For those riding Gold Wings we have the additional benefit of having CB's which makes communicating about hazards even easier.

Visibility – Although Elly May stands out on the roadway like the proverbial 'sore thumb' on the road even a bright yellow motorcycle can't replace the visibility of having 7-10 bikes riding together. It is hard for motorists not to become more aware of us when we ride together as an organized group.

Support During Breakdowns – Although many of us ride Gold Wings which rarely break (as compared to some other lines of motorcycles) there are still times when it happens. When riding with a group you will never be stuck on the side of the road without the whole group stopping with you to assist. Many of you who have been riding in groups for years can attest to this.

Shared Enjoyment – There is nothing like riding through a particularly beautiful or challenging stretch of road and then stopping for lunch or just taking a break and commenting on the roads, the curves, the scenery, etc. It is just much more fun to enjoy a ride with other fellow motorcycle enthusiasts than by yourself.

Shared Knowledge – I have very much enjoyed learning from some of the more experienced riders in our group. I have learned more about motorcycles and motorcycle riding in the past 4 years being a part of Sunsphere Wings than in all of my previous years of riding. Many of you have been a part of that and I thank you.

We are currently in the heart of the East Tennessee Fall and I encourage everyone to take advantage of our group rides and enjoy this beautiful time of year with other riders. And remember...we are better together!

Keep the shiny side up and the throttle open!

Scott



Technical Coordinator: Chris Harden



Motorcycle seats

When it comes to motorcycle seats you have several options

The Ultimate seat offers :

Our GL1800 Goldwing **Midrider** seat is our main seat that will suit most riders. If you are happy with the riding position, which includes your reach to the handlebars, leg room and reach to the ground that your stock seat offers, the **Midrider** seat will work for you. Our **Midrider** seat will sit you in the same position, but provides a comfort level so good, you won't want to get off your bike on those long rides.

Our GL1800 Goldwing **King** seat is primarily designed for riders over 6' 3" and over 260 lbs and/or riders with long legs (more than a 34" inseam). Our **King** is 1 1/2" wider than the stock seat to provide more butt and under thigh comfort, but its nose is also narrowed down to allow correct inner thigh room. The **King** will sit you 1/2" higher and 1 1/2" further back from the handlebars and cowlings. This allows for less bend in your knees and helps for your long distance ride comfort.

The Mustang seat offers :

Mustang Touring Seats for Honda GL1800 01-17

The Ergonomic Comfort You Deserve

Driver & Passenger Seat Base

The ultimate in seating comfort for both of you!

This plush seat adds full enjoyment back into riding your Wing.

The full seat is 1" lower than stock with both contoured seat pockets pushed 1" to the rear. Angled back to cup your backside, the wider than stock 18" wide by 17" deep seat-pocket for driver & 18.5" wide by 13" deep seat-pocket for passenger, pulls you in - instead of pushing you out. A narrow front also aids in firmer ground footing for shorter riders.

Coordinate with the stock passenger backrest pad or our Passenger Backrest for a more vertical seating position.

Constructed from the highest-grade seat materials with premium rigid seat pan - you won't find a better seat on the market.

Heated Driver & Passenger Seat Base

All the features above with the addition of heat! Flip the switch & never have a cold tush on the road again!

Heating connects directly to your bike with convenient dual zone high/low settings for Driver/Passenger right on the side of your seat.

Driver Backrest

What a difference small things can make. Our Driver Backrest plugs directly into this seat with support from an 11" top pad that narrows to 7" which gives ample passenger leg room.

Fully adjustable even while riding, the 2" front/rear & 2-1/2" vertical adjustment will let you get the support exactly where you want it.

Conveniently folds out of the way for easy passenger mounting. With this one, everyone will be happy!

Passenger Backrest

Passengers fully feel supported & can comfortably sit up more vertically with our Passenger Backrest. Angled 2" forward from stock at the top & pushed to the rear at the base. Add miles of enjoyment to your riding days.

We have used Mustang Seats for years on our own bikes and fully endorse these seats. You will be amazed at the difference in comfort, which will make any length ride more enjoyable.



Technical Coordinator: Chris Harden



The Corbin seat offers :

43 years of Gold Wing development meets 50 years of Corbin seat design.

Not only have we brought all of our design experience to fruition on the new Gold Wing, but we've added our latest tech too... Fire & Ice! Your comfort is assured through the application of electric heated AND cooled seating in both the rider and passenger seating areas. With the Corbin saddle, you're going to find what is beyond the horizon.

Naturally we built up the saddle ergonomically to provide the best possible support and elimination of hot spots. This has been a staple of the Corbin design and is one of the most critical components of a true, touring class seat design. In the front, the Corbin saddle offers seven inches of vertical support. Increase this support easily by using any of the Corbin backrest models with simple one bolt installation.

Shown above, the Master's Type saddle is shown with a variety of backrest models including our #BR, #02-SB and #02-T Ovalbac backrests. When installed these bring your overall vertical support up to 16.5 inches for the #BR and #02-SB or 20 inches for the #02-T. Choose from any of the backrest models available to suit the look and amount of support desired for your ride. Corbin backrests install easily with a single bolt and adjust to provide a personalized fit to your posture. On this seat model the backrest angle is adjustable and also the fore-aft positioning. Both adjustments can be made without removing the seat from the bike. The Gold Wing Master's Type saddle also allows the rider's backrest to fold down to ease mounting the bike.

For your passenger we've created a companion trunkrest that not only completes the look of your new seat, but completes the comfort value. Built up on the inside with the same Comfort Cell foam as the saddle and provides your copilot with 15 inches of support for the long road ahead.

In the saddle we've maximized each of the riding positions to provide the greatest area of body contact possible, thus spreading your weight over a greater area. This helps to eliminate hot spots and provides excellent support for longer rides. Both seating platforms have been ergonomically sculpted to spread weight properly and support your body.

Mr C picked up a cool **THERMAL IMAGING DEVICE** and we just couldn't pass up the opportunity to play around with the nifty gadget. Although the color time lapse video ([HERE](#)) is interesting to watch, this greyscale comparison actually tells the story more concisely. The two images in this comparison were shot just seven minutes apart with the first image being on "Cool" and the second image flipped to "Heat". In these images, dark is cold and white is hot... Click the thumbnail and take a peek.

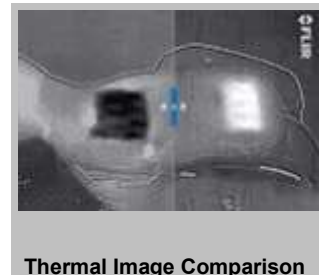
In order to provide both heat and cooling features on the saddle, the Corbin system operates differently than the OEM heating units. Here's the skinny:

HEATING: Like the OEM seat, the Corbin saddle includes heating units in the rider seating, passenger seating and trunk pad. Corbin heater is activated via the switch on the left side of the saddle and controls both front and rear areas. Saddle maintains temperature automatically.

COOLING: Due to space considerations, cooling units are placed in the rider and passenger seating platforms only. Like the heaters, the seat will cool both positions with the flip of the seat mounted switch.

For a truly luxurious feel, we include genuine leather seating panels that breathe with your body. Coordinated vinyl side panels keep the foam shape tight and the saddle looking new longer. Just remember to care for your saddle properly with regular conditioning using a product like our Saddle Cream. This will help your leather saddle to break in along with your foam shape, age gracefully and remain weather resistant.

Corbin saddle installs like stock with bolts through the saddle and into the chassis. Saddle is designed so the left side panel can be removed without taking off the seat for easier access to your battery.



Technical Coordinator: Chris Harden



The Saddlemen Seats Offer :

The Roadsofa™ is crafted specifically for riders that love to lay down 500+ miles of the open road in a day. It is the ultimate long-distance touring seat for Harley-Davidson touring models. Standard features include rider and passenger Gelcore™ Technology, a split-cushion lumbar area designed to sit you into the Gelcore™ instead of hammocking your body onto the cover like most OEM and aftermarket seats on the market.

Upgrade options include driver's backrest, rider and passenger heated options, trunk pad covers, and more.

Our Gelcore™ Technology ([explained](#)) is a guarded company secret that no other manufacturer can duplicate. Don't be fooled by other companies' foam only, air and gel stories. Our Gelcore™ is formulated and manufactured in house and is engineered to dampen, divert, and deflect energy through a mechanical process resulting in a smooth, therapeutic ride.

- Designed and made in the U.S.A.
- SaddleGel™ in front and rear reduces tailbone pressure and increases circulation and comfort for both driver and passenger.
- Our tall lumbar support and wide driver saddle support the back and legs for superior comfort, while the streamlined nose improves the rider's reach to the ground.
- The refined split-cushion design separates the seating surface from the lumbar support, reducing tailbone and back pressure from maximum long-range comfort.
- Ventilated soft upholstery seating leather provides the most luxurious look and ride.
- It comes with a fitted rain cover specially designed to protect your Roadsofa™ motorcycle seat from water and dirt.
- Hi/low seat heaters provide warmth, comfort, and the convenience that today's riders demand. (Available on some models)
- Matching passenger backrest / Tour-Pak pad cover completes the custom look. (Sold Separately)(for models that require)
- Models are available with a built-in backrest that eliminates additional brackets that mount to the fender.

The Diamond motorcycle :

Diamond motorcycle specializes in customer making seats that fit specifically to the persons size and height they also do custom covers for your bike

The original seat:

Is comfortable but seams to form to your body as you ride making it comfortable

Add ons for seats :

AIRHAWK® Cruiser R Large, Cover in Breathable Spacer Mesh cloth material w/red vinyl accent, non skid bottom material.

BUILT IN STRESS RELIEF DESIGN FEATURES – REDUCED PRESSURE POINTS ON TAILBONE, SCROTUM AND PROSTATE CELL
HEIGHTS LOWER ON FRONT FOR BETTER LEG PASSAGE

AIR PAD MADE OF DURABLE POLYURETHANE

COVER: BREATHABLE SPACER MESH W/RED ACCENT, NON SKID BOTTOM

CRUISER STRAPS INCLUDED

MEASURES 14" L X 14.5" W

FITS MOST CRUISER MOTORCYCLES

AIR PAD MADE OF DURABLE POLYURETHANE

COVER: BREATHABLE SPACER MESH W/RED ACCENT, NON SKID BOTTOM

CRUISER STRAPS INCLUDED

MEASURES 14" L X 14.5" W

Gel Pads :

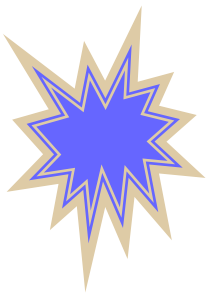
Look no further than Pro Pad to get gel seat pads for Honda Motorcycles. All of our Honda motorcycle gel seat pads are proudly made in the U.S.A. Maximum comfort for maximum riding fun - because riding in pain isn't fun for anyone. Need help selecting the correct size? The [Pro Pad Fitment Chart](#) should help. Check out the sheepskin seat pad [Product Review](#) from Baggers Magazine. Above you'll find seat pads for Honda touring motorcycles and Honda cruiser motorcycles.

Seat Beads

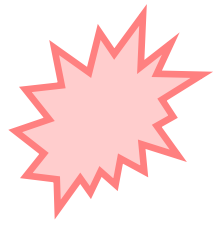
Seat cover composed of a 10 inch by 12 inch (25.4 cm by 30.5 cm) wooden bead seat with bunge cord and hooks that make for easy install. Great protection from the hot, sticky vinyl seat of your bike! Shown here on a GL1800 seat.

In conclusion there are a lot of options out there for seats from 12.00 beads to 2500.00 seats with all different levels of comfort it will really depend on your personal needs as a rider to determined what seat is best for your needs but do your research before you purchase to make sure it's right for you





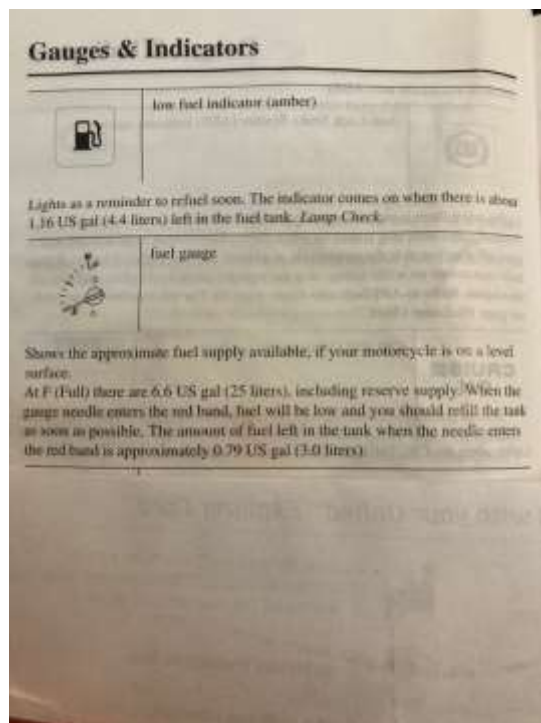
How Much Fuel?



How many times have you heard this question on a long ride? Ride leaders need to know how to plan for fuel stops and you should know how to answer.

This article will hopefully shed some light on how to measure the range of your Gold Wing.

Below is an excerpt from the Honda 2015 owners manual.



By now you should have good idea of the fuel milage for your particular machine-so when the low fuel light comes on indicating 1.16 gallons left, you will know how far you can continue. (Normally a lot further than you think.) Remember, when the needle is on the red line, you have about 3/4 of a gallon left in your tank. So don't panic

Union County Humane Society Ride



Let's Get signed Up



. You can access a membership application from our tn-b.org web site. Please contact Stanley if you need any assistance completing your application for the EWMA

SELF-GUIDED RALLY RIDES

THE SNAKE
SOUTHERN DOZEN
BACK OF THE DRAGON
BRISTOL, VA CASINO
POKER RUN

GUIDED RIDES TBA @ the rally

GAMES / EVENTS DURING RALLY

TALENT SHOW
BIKE GAMES
FOOTBALL CORNHOLE TOURNAMENT
ROCK TOURNAMENT
INDOOR GAMES (TBA @ RALLY)
KARAOKE CONTEST

(*EVENTS/RIDES ARE SUBJECT TO CHANGE)

Please patronize some of these excellent restaurants near our host hotel



German cuisine



Local "American" cuisine



Local "American" cuisine



2025 Tennessee District EWMA Rally

"AMERICA THE BEAUTIFUL"

April 24 - 26, 2025

LET'S RIDE!



HOST HOTEL

H Holiday Inn

101 West Springbrook Drive, Johnson City, TN 37604

RESERVATIONS: (423) 282-4111

Mention "Eagle Wings" for rate of \$120 a night, tax not included. Includes complimentary Wi-Fi. Pet Friendly rooms are available @ \$25 + tax per night & non-refundable. The hotel also has a Fitness Room, laundry, and a dine-in breakfast buffet.

EWMA rate expires 31 March 2025 - any reservations made after this date will be accepted by the hotel on a space available basis at the prevailing rates.



Registration, Please Print Clearly

NOTE: No refunds after 15 April 2025 without the District Director's approval.
All refunds are subject to a \$15 handling fee.

Rider _____ State _____ Chapter _____
 EWMA # _____ Exp Date _____ Age _____
 EWMA Position _____ Is this your first TN District Rally Y N
 Co-Rider _____ State _____ Chapter _____
 EWMA # _____ Exp Date _____ Age _____
 EWMA Position _____ Is this your first TN District Rally Y N
 Distance to Rally _____
 Street Address _____
 City _____ State _____ Zip _____
 Phone _____
 E-mail _____

GRAND PRIZE / EARLY BIRD DRAWINGS

- * One Grand Prize ticket included for each pre-registration. First Grand Prize drawing is \$750, second place is \$500.
- * Early Bird deadline -15 March 2025. Early Bird prize is \$100 by drawing.

Liability Release All registrants must sign

We agree to hold harmless EWMA, the co-sponsoring organization and any property owners for any loss or injury to self or property by any reason by participating in this EWMA sponsored rally.

Signature _____ Date _____
 Signature _____ Date _____

- Mailed registration forms must be postmarked by 30 March 2025 to be considered pre-registered.
- ALL registrations increase by \$5 after 31 March 2025.
- Day passes will be available at the rally for \$20 per day

EWMA members	\$30 x _____	= \$ _____
Non-members	\$35 x _____	= \$ _____
13 - 15 Years Old	\$10 x _____	= \$ _____
12 years old & younger	Free with paying adult	
Grand Prize tickets	\$1 ea x _____	= \$ _____
	or 6 ea for \$5 x _____	= \$ _____

Saturday Night Dinner & Show

\$28 per person x _____ = \$ _____

REGISTRATION GRAND TOTAL = \$ _____

Please make payment to: **TN EWMA**

Mail entire registration with check/money order (NO cash) to:

Bob Mack, 1470 River Rd, Kingston, TN 37763

Listed below are just a few of the loyal and generous vendors attending our rally - please visit them!





Eagle Wings Motorcycle Association
3rd Annual Rally
Eagle Wings Rendezvous
Aug 28th – Aug 30th 2025



**WE'RE GOING TO
FORT SMITH, AR!**

3 Nights of FUN, FUN, FUN!!!!

3 Days of Rides, Presentations and FUN!

Thursday GRAND OPENING PARTY FUN
Light Dinner and entertainment

Saturday Night is Closing
Ceremonies, Dinner and Entertainment

Friday Night Bike and Light Show Vote for your favorite and enjoy some ice cream!

Let's make this the biggest Rendezvous yet!
We can't wait to see you there!

Registration Fees (onsite \$10 more)	Cost	Qty	Total
EWMA Members	\$45	_____	\$_____
Non Members	\$55	_____	\$_____
Day Passes-available for purchase on site			
Dinner Thursday Night (Max seating-360)	\$30	_____	\$_____
Dinner Saturday Night (Max seating-360)	\$45	_____	\$_____
Chicken _____ Pork _____			
First Aid/CPR _____	\$25	_____	\$_____
Pre-Registration Tickets	Cost	Qty	Total
Grand Prize & Mystery Cash—Books of 5	\$10 X	_____	\$_____
Grand 50/25/15/10— Books of 5	\$20 X	_____	\$_____

GRAND TOTAL ENCLOSED: \$_____

**All pre-registrations must be
received
BY 8/9/2025**

Make Checks payable to EWMA
Mail completed forms to:

EWMA
Patti O'Neill
2125 Meander
Prescott AZ 86305
Email: ewmacfo@gmail.com
Phone 408-639-0415

\$15.00 fee on all cancellations
No refunds after Aug 1st 2025

CC# _____

EXP _____ CVV _____

Billing Zip Code _____

**For more information go to
www.ewma.world.org/rendezvous**

Name: _____ EWMA #: _____

Name: _____ EWMA #: _____

Address: _____ Reg/District/Chapter: _____

City: _____ State: _____ Zip: _____

Phone: _____ E-mail: _____

The undersigned, agree to comply with the ideals governing this event and to hold harmless the EWMA, co-sponsoring organizations and property owners for any loss or injury to self or property in which I/we may become involved, and I/we agree to assume responsibility for any property which I/we knowingly damage. **EWMA reserves the right to refuse entrance to anyone at any time.**

Rider Signature: _____ Co-Rider Signature: _____

Lets Celebrate



Birthdays

Larry Hale 11/16

Anniversary

Merrilee & Tom Peck 11/2
John & Doretha Thompson 11/29



Ride Schedule 2024



Ride Coordinator : Wally Maliskey

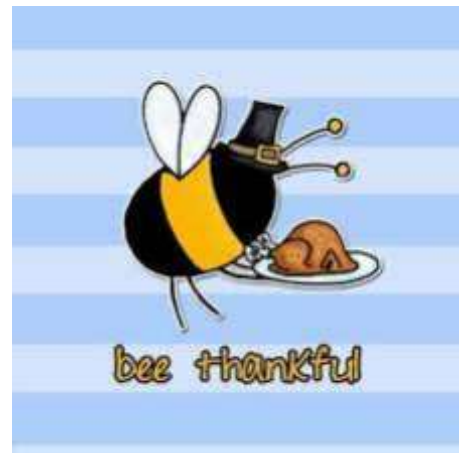
NOV –

5th Regular meeting

DEC -

3rd Regular meeting (if needed)

7th Christmas Party...Mike and Linda to lead...1400 start eating time....



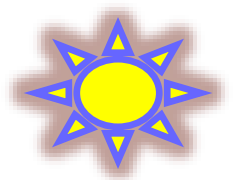
Always Check the Chapter Web Site for the most updated details

www.tn-b.org (Ride Schedule)





"Chapter Visitation"



Chapter **B** meets the **1st Tuesday** each month at **Shoney's** Clinton Exit 122 off I-75 North
Eat at 6:00 pm meeting at 7:00 pm.
Call Tom & Merrilee Peck
423-494-9818

Chapter **M** meets the **2nd Tuesday** each month.
Eat at 6:00 pm meeting at 6:30 pm..
Chapter M meets at Shoney's 1100 Highway 321
Lenoir City, just off I-75 exit 81, CD Brian Richards 865-249-6173

Chapter **C** meets the **3rd Tuesday** each month at
Randall's Restaurant Hwy 11W and 120 Old Union Rd, Church Hill TN Eat at 5:30 and the Gathering starts at 6:30. Tom & Carolyn Jarrell
423-383-0339

Chapter X
Meeting TBD
CD John McComsey (731-336-4407)

Chapter **A2** meets the **3rd Monday** each month at Shoney's
1021 Lamar Alexander Pkwy Maryville, Eat at 6pm Meeting
at 7pm. Chapter Director Patti Hamilton

Chapter A

Last Saturday Eat @ 9:00am / Meet @ 10:00am
Golden Corral 315 Old Lebanon Dirt Rd
Hermitage, TN
CD Troy & Vickie Hurt ([615-351-6629](tel:615-351-6629))

Chapter O

1st Tuesday Eat @ 6:00pm / Meet @ 7:00pm
Gondolier Rest 3300 Keith St NW
Cleveland, TN
CD Shane @ Amanda McAmis ([423-310-5903](tel:423-310-5903))

Chapter S

3rd Saturday
Eat @ 1:00pm / Meet @ 2:00pm Junbo & Delicious
Shopping center at corner of Imperial Dr & Rockland Rd
Henderson, TN
CD Grant & Carol Bottomley ([615-337-8386](tel:615-337-8386))

Chapter Y

3rd Saturday
Eat @ 9:00am / Meet @ 10:00am
Trunty United Methodist Church
2303 Jones Blvd Murfreesboro, TN
CD Wesley & Cindy Neal ([615-668-4448](tel:615-668-4448))

Chapter Z

2nd Saturday Eat @ 10:00am / Meet @ 11:00am
AMERICAN LEGION HALL 119 N Park St.
Hohenwald, TN
CD Bill Archauer ([615-504-3068](tel:615-504-3068))



LET'S GO SHOPPING!
See the "Quarter Master"

Deniese James
richanddejames@yahoo.com

See Denise for shirts or patches





Visit our web site and follow the links to join this new and exciting association now that our GWRRA association closed down its operations.

Forward your membership numbers to Stanley after you receive them from National as we build our member roster moving forward with our membership drawing at each chapter meeting.



Eagle Wings Motorcycle Association Team Structure

This is intended only as an example as to what we have envisioned how this new Association would look like.

CEO/ President

International Team:

Vice President of Operations, Vice President of Safety/Ride Coordinator, Vice President of Finance and Vice President of Special Operations

Regional Team:

Regional Director, Regional Safety/Ride Coordinator, Regional Treasurer

District Team:

District Director, District Safety/Ride Coordinator, District Treasurer

Chapter Team:

Chapter Director, Chapter Safety/Ride Coordinator, Chapter Treasurer

The Directors would be appointed by the Director above them and the Director would appoint their own Team with approval of the Team above them, like the Chapter SRC would be appointed by the CD with approval of the DSRC and so on.